

Welcome! 欢迎！
Velkommen! Bienvenido!
'Ασπάζομαι!! Fáilte!
환영합니다!
Soo dhowow!

EDUCATING CHILDREN



HEARTLAND
HEAD START

EMPOWERING FAMILIES

Parent Assembly Participants Don't forget your raffle ticket!



- Attend:**
- Registration
 - Orientation
 - Parent Assembly
 - Sept. PCC
 - Other Misc.

**3 Winners
drawn
Oct. 6th!**

“

My vision for family engagement is ambitious...

I want to have too many parents **demanding excellence** in their schools. I want all parents to be **real partners in education** with their children's teachers, from cradle to career. In this partnership, students and parents should feel connected—and teachers should feel supported. When parents demand change and better options for their children, they become the **real accountability backstop for the educational system.** ”

—ARNE DUNCAN, U.S. SECRETARY OF EDUCATION, MAY 3, 2010

Thank you for coming!

Heartland Head Start

What HHS IS and IS NOT!

IS: We are your partner for education, health, nutrition, parent involvement, and social and emotional improvement. We help children and families, who sometimes face the most challenging circumstances, build the solid foundation they need to succeed in school and beyond.

IS NOT: A day care center or child care program or your child's babysitter.

Heartland Head Start Program Goals

2015-2020

Goal #1 – HHS will implement research-based strategies to support children’s development of language and literacy, so that children acquire skills for future educational success.

Goal #2 – HHS will engage and encourage children, families and staff in attaining consistent attendance which leads to lifelong success.

Goal #3 – HHS will increase and support parents and families on engagement, transition and overall wellness activities so that they will become active and healthy contributors in their home, school and community.

WHAT DOES BEING PARTNERS IN YOUR CHILD'S GROWTH AND EDUCATION MEAN?

We - HHS (school) and YOU (home), need to create a relationship of trust and respect and see each other as equal partners on this journey.

There is over 50 years of research that links the many roles that families play in a child's education -

—*as supporters of learning, encouragers of bravery and determination, models of lifelong learning, and promoters of good programming and locations for their child, **with signs of student success***

- including student grades, test scores, lower drop-out rates, students' sense of personal skill and worth for learning, and students' beliefs about the importance of education.

We need to be partners to support your child's best interest, to exchange knowledge about your child, and to share in program leadership. We also need to work together to establish child and family goals that we hope will motivate achievement.

**YOU ARE THE EXPERTS ON
YOUR CHILD AS YOU KNOW
THEM BEST!**



**WE ARE THE EXPERTS ON CHILD
DEVELOPMENT, HEALTH AND NUTRITION,
COMMUNITY RESOURCES, LAWS AND
REGULATIONS ETC., AS WE KNOW THEM BEST!**



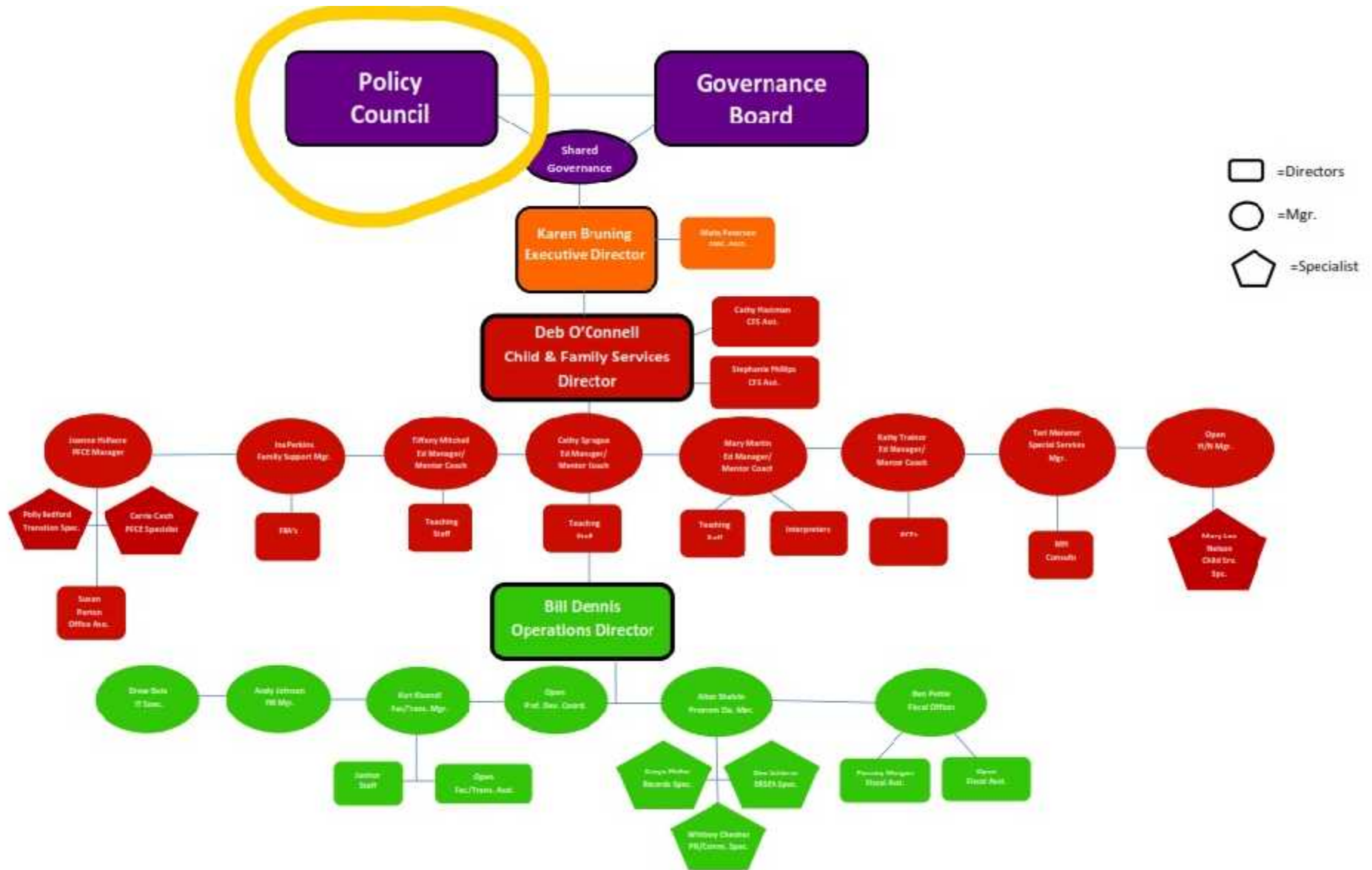
A winning combination!

What makes a winning team?

- ✓ Open and honest communication
- ✓ Mutual respect and trust
- ✓ Responsiveness
- ✓ Address concerns immediately
- ✓ Only discuss positives in front of children



The Many Areas of HHS!



Child and Family Services

- Health & Nutrition
- Family Support
- Parent Family & Community Engagement
- Education Manager/Mentor Coach
- Special Services
- Transitions
- Mental Health Consultants
- Interpretation/translation

Administrative Operations



- Human Resources
- Facilities
- Transportation
- Marketing & Outreach
- Records
- Finance
- Janitorial
- Enrollment & Recruitment

Program Options

Head Start
Ages 3-5

Part-Day/Part-Year Center Based

- Brigham
- Stillwell West
- Pontiac

Full-Day/Full-Year Center Based

- Stillwell East - CCAP Requirement

School-Day/School-Year Center Based

- Trinity Lutheran Church
- Mennonite Church
- Stillwell West

HEAD START (continued)

Each site (location) minimally has the following staff (all center based):

- Education Manager/Mentor Coach
 - Family Resource Advocate (FRA)
 - Teaching teams
 - 3 Teachers per classroom

Program Options

Early Head Start

Pregnant women, children 6 weeks up to 3 years.

Full-Day/Full-Year Center Based

- Stillwell East - CCAP Requirement

Full-Day/Part-Year Center Based

- Stillwell West
- Stillwell East

School-Day/Full-Year Center Based

- Pontiac

Home-Based Services

EARLY HEAD START (continued)

Each site (like Head Start) minimally has the following staff (center based):

- Education Manager/Mentor Coach
 - Family Resource Advocate (FRA)
 - Teaching teams
 - 3 Teachers per classroom and a Facilitator

HOME-BASED –

- Education Manager /Mentor Coach
 - 5 Parent Child Educators (PCEs) –
 - Combined teaching and FRA services

**Our funding comes from the
Federal Government &
All of our services are FREE!**



We are regulated by the Office of Head Start, DCFS, state and federal laws.

Some families pay a co-pay through CCAP!

IDHS' Child Care Assistance Program provides low-income, working families with access to affordable, quality child care that allows them to continue working and contributes to the healthy, emotional and social development of the child.

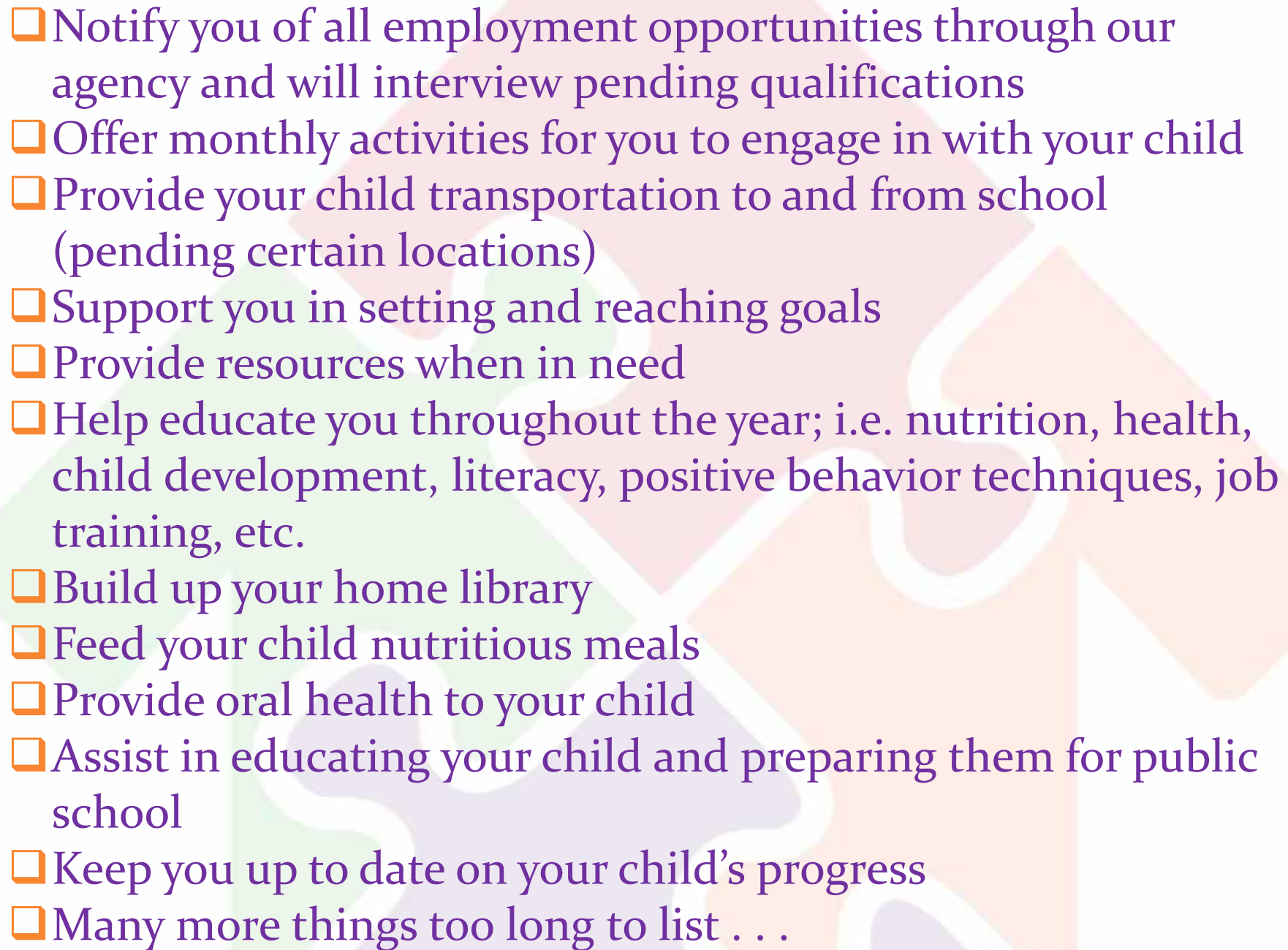
The Child Care Assistance Program requires families to cost-share child care expenses on a sliding scale based on family size, income and number of children in care. In addition to helping working families, the Child Care Program also serves:

- Families who are receiving Temporary Assistance for Needy Families (TANF) and participating in education & training in accordance with their responsibility and service plans (RSP);
- Teen parents seeking a high school degree or its equivalent;
- Families not receiving TANF, who are pursuing additional education to improve their job opportunities.

What we do for families!



*Empowering
Families*

- 
- ❑ Notify you of all employment opportunities through our agency and will interview pending qualifications
 - ❑ Offer monthly activities for you to engage in with your child
 - ❑ Provide your child transportation to and from school (pending certain locations)
 - ❑ Support you in setting and reaching goals
 - ❑ Provide resources when in need
 - ❑ Help educate you throughout the year; i.e. nutrition, health, child development, literacy, positive behavior techniques, job training, etc.
 - ❑ Build up your home library
 - ❑ Feed your child nutritious meals
 - ❑ Provide oral health to your child
 - ❑ Assist in educating your child and preparing them for public school
 - ❑ Keep you up to date on your child's progress
 - ❑ Many more things too long to list . . .

Other important things to know about how we help your child.

- We screen ALL enrolled children. If anything concerning shows up, we provide further screenings and evaluations if needed. Early identification and involvement from you is critical to your child's success. Staff share their concerns with you – so please share your concerns with us. It allows us to focus on the “whole child.”
- We have classroom consultants who meet with every teacher and Parent Child Educator to review the well-being of all children. Beginning at birth, children need positive relationships with the adults who care for them. We work on nurturing relationships; managing feelings; following rules and playing using their imagination and creativity.
- We use assessment tools by observing your child to document their strengths and areas to improve upon. These are shared with you during Parent/Teacher conferences.

How YOU can help us!



How to help!

- Communicate a lot and positively (remember, we are your partner, not your enemy).
- Ask how you can help! We have lots you can do!
- Abide by our policies and procedures.
- Ask questions when you don't know.
- Attend meetings and conferences.
- Take our partnership and our work with you and your child seriously.
- Maintain routines and schedules for your child - bed time, meals, etc.
- Be involved.
- Keep up with your child's attendance.
- Keep your information current – address, email, phone number, pick up information, etc.
- Bring your child prepared for the weather outside.
- Step up and be a Head Start leader through Policy Council.

How to help!

- Read to your child daily.
- Ask your child a lot of questions.
- Keep your child home when they are sick.
- Promote the good, ignore the bad= positive behavior.
- Follow up on treatments – dental, health, lice, etc.
- Feed the brain, not the belly.
- Attend our events and trainings.
- Don't assume the worst. Think/discuss before acting – or using social media in a negative way.
- Keep appointments.
- Leave all electronic devices in your vehicles or homes prior to coming to HHS.
- Do not bring in peanut or tree nut related foods into our centers.
- Arrive and leave on time.
- Address concerns immediately.
- Be responsive.

How to find out what is going on?

The logo features the text "One Call Now" in a dark blue, sans-serif font. The word "Now" is enclosed within a green speech bubble icon that has a white outline and a small tail pointing downwards and to the left. The entire logo is centered within a white rectangular box with a thin grey border.

One Call Now

- Bad weather/school closings
- Emergencies
- Event reminders
- More . . .

Keep your contact information current!

How to find out what is going on?



Heartland Head Start website:
www.heartlandheadstart.org

Heartland Head Start
Facebook page:

<https://www.facebook.com/heartlandheadstart/>



Staff newsletters

Managing all of the pieces!



Transportation – Visiting

HEARTLAND HEAD START STILLWELL EAST
206 STILLWELL ST, BLOOMINGTON IL 61701



Transportation – Self Transport

HEARTLAND HEAD START STILLWELL WEST
1407 WEST WASHINGTON, BLOOMINGTON IL 61701



Transportation – Self Transport

HEARTLAND HEAD START STILLWELL EAST
206 STILLWELL ST, BLOOMINGTON IL 61701



Transportation – Self Transport

- Try to drop off as efficiently as possible and ONLY in designated areas. Other families are trying to do what you are doing as well.
- Be patient and slow in parking lots and on the look out for other children and cars.
- Every child (required by law to be in a car seat), must be in a car seat upon arrival AND departure. Staff are mandated reporters and must report this to authorities if this rule is not followed.
- Smoking in cars and on HHS property is PROHIBITED. Cigarette butts are not a pretty site nor are they fun to clean up. Most importantly second hand smoke is very dangerous to your child.
- Music must be maintained at a minimum when on HHS property. Just one hour of loud music a day can cause hearing issues in children, which can cause many other issues, such as speech delays, etc.
- No child under the age of 13 can be left in a car while enrolled children are being dropped off.
- All children need signed in and signed out of their classroom.
- Our buildings on the main campus are locked at all times. Families are provided a code to use during their enrolled time. Codes should not be shared. This is for the safety of your children.

Transportation – ICSB



We contract our bussing service out to Illinois Central School Bus. Drivers and monitors are employees of ICSB and are not Heartland Head Start staff.

Transportation– ICSB/HHS RULES

#1 –Transportation on a school bus is a service we provide free of charge and is not required. Be patient with staff as we work through issues.

Refer to your signed agreement for reminders!

- Your child needs to be ready 10 min. before to 10 min. after scheduled time
- Your child will be brought back to Central Office if no one is home and then someone on the pick up list with ID has to pick up the child. Late fees will be charged. Reminder: we do not have the staff to manage extra children outside of the classroom and our staff have families and children to also pick up and get home to.
- Bussing can be taken away due to disciplinary actions and not following the agreement.
- Notifications of changes need to be reported immediately to the Central Office. (Only 3 allowed per year.)
- No one under 18 is allowed to take the child to the bus OR pick the child up.
- No one (besides staff) is allowed on the bus. It is a federal offense.
- Children not riding 3 days in a row will be removed from the route.

Attendance

Your child's attendance is critical to their success, now and in the future.

This not only means they come to class, but families keep their appointments in home visits.

Chronic absenteeism is defined when a student misses at least 10% of days in a school year. In a year with 180 school days, this means missing 18 or more days, or just two per month!

85% - required regulation **87%** our goal for the year **79%** - last year's percentage

If a child continues to miss, we must make efforts to resume attendance. If the child's attendance does not resume, then we must consider that slot vacant. (release)

School Matters!



Attend Today, Achieve Tomorrow

Attendance Agreement

You MUST contact HHS each day your child will be absent. (Call our attendance line.)

If your child misses regularly, staff will schedule a conference to discuss.

If your schedule changes in drop off or pick up times, please call the Central Office.

Late pick up charges can and will be assessed if your child is not picked up. If no response within 15 min, HHS has the legal right to call the authorities and/or DCFS.

Who Can Read on Grade Level After 3rd Grade?³



64%

of kids with good attendance in K and 1st (missed 9 or fewer days both years)



43%

of kids with at-risk attendance (missed more than 9 days both years)



41%

of kids chronically absent in K or 1st (missed 18 or more days one year)



17%

of kids chronically absent in K and 1st (missed 18 or more days both years)

Reasons and Effects on being absent

Most reasons a child misses school in the early years is because of the parent (tired, weather is bad, lazy, lack of caring, etc. etc.) or your child is sick. We do NOT want your child at school when they are sick. They will not be productive and they can/will infect other children and/or staff.

They need to be fever free and not contagious.

Children with better preschool attendance have higher kindergarten readiness scores.

Students who are chronically absent in preschool are five times more likely to be chronically absent in second grade.

Parents who believe that regular preschool attendance is important have children with better attendance.

We can help! Talk to your PCE, FRA or teacher for suggestions!



Health & Safety

Your child's health and safety is our #1 concern!

- We work hard to maintain safe facilities and classrooms. If you notice something that appears unsafe, please report it.
- We utilize video surveillance cameras for your child's safety – not for general viewing or observations.
- We use codes for entrance during enrolled times. Codes should not be shared.
- We utilize emergency services if necessary.
- We have a 2 adult at all time policy.
- We report all accidents and incidents to the parent.
- If we suspect a parent is under the influence, we will act in the best interest of the child.
- We conduct daily inside and outside health and safety checks.
- We try to eliminate potential hazards at all times.
- We maintain strict confidentiality in all areas regarding you and your child.

All staff working for HHS are mandated reporters. We have a legal responsibility to report ANY suspicion of child abuse or neglect.

Health & Safety

Peanut and Tree nut free
Cell phone free
Germ free
Bug free

Smoke free
Gun free
Birthday treat (food) free
Alcohol free



We need YOU!!

Non-Federal Match Requirement = \$860,000

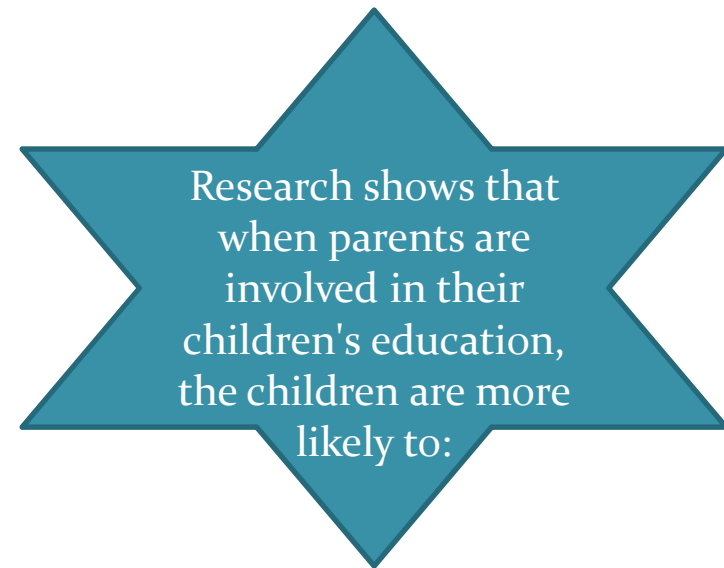


Policy Council	\$39.47/hr.
In classroom	\$15.04/hr.
In office	\$12.45/hr.



**GOODS
SERVICES
SPACE**

"When parents are involved in their children's education at home, they do better in school. And when parents are involved in school, children go farther in school and the schools they go to are better."



- ✓ earn better grades.
- ✓ score higher on tests.
- ✓ pass their classes.
- ✓ attend school regularly.
- ✓ have better social skills.
- ✓ show improved behavior.

- ✓ be more positive in their attitude toward school.
- ✓ complete homework assignments.
- ✓ graduate and continue their education.

Dad's
matter
too!

**DON'T SIT BACK AND BE AN OBSERVER: JUMP IN
AND BE A PART OF YOUR SCHOOL COMMUNITY!**

Here are 8 factors to consider about parent involvement:

1. Your children need to know we are on the same team.
2. We are with your child a good portion of the day.
3. Together we have power.
4. We need mutual trust.
5. When you participate in school events, you get to see a different side of your child.
6. Our worlds impact each other.
7. If we don't have input from you, we make assumptions.
8. Together we can put pieces of your child's learning into a puzzle that makes sense.

Parents can serve many in many different roles in the educational process:

Home teachers, advocates for their children, volunteers, fundraisers, committee members, office assistants, planners, painters/mowers, etc. Most importantly they can even serve in decision making and oversight roles for the school.

The more parents participate-the better for student success!

self-esteem

bullying

peer pressure

anxiety

YOU

addiction

suicide

fear

can make a

loneliness

DIFFERENCE!

stress



Leadership opportunity!



PCC – become an officer for Parent Child Connections and have input into planning and carrying out the activities. Meets throughout the year.

PC – become a member of our Policy Council governance team and have an input on program decisions. Meets monthly.

 **TOGETHER**

 **WE** Ensemble
एक साथ

 **MAKE** Insieme
一緒に 一起

 **THE** Together
Juntos

DIFFERENCE

Thank you so much for coming!